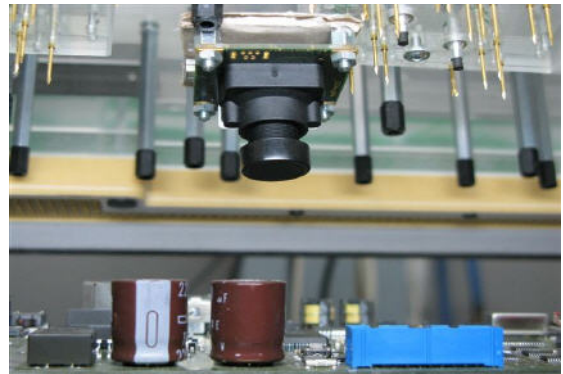


Optical Inspection System for fast Automated Visual Inspection

PlatiScan JetTest: Camera inside Testfixture

Testing "on the fly" as part of Incircuit-Tests.

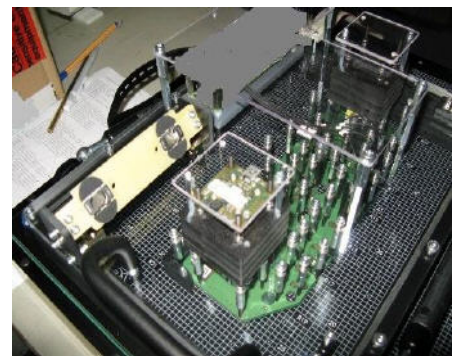
- VGA-resolution up to **5 MPixel**
- up to **8 cameras** can be connected
- Colour or Black&White
- Testtimes below 1 second *
- fully integrated in testplan
- Expansion to other than ICT-testsystems, like Boundary Scan, Functional Test, Flying Probe, ...
- For **Display-, LED-, Polarity-**Testing or simply for Presence-Test of electrically non-testable parts.
- Failure-output graphically or as ASCII-report
- **Transfer of Data to Repair-Station**



PlatiScan JetTest can control up to 8 fix mounted USB-Micro-cameras inside the testfixture. That way special areas of single devices can be inspected very precisely.

And all in parallel to the electrical test.

- depending on testtype and number of tests



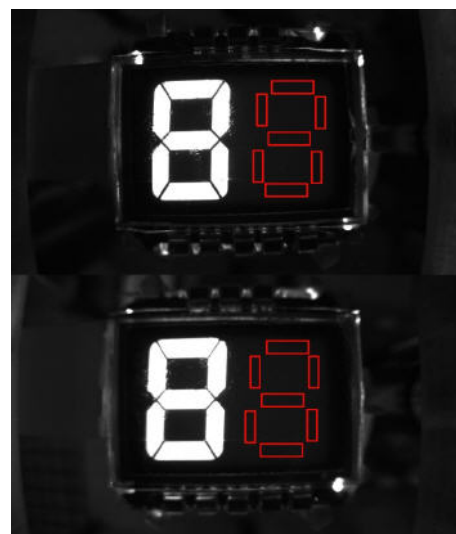
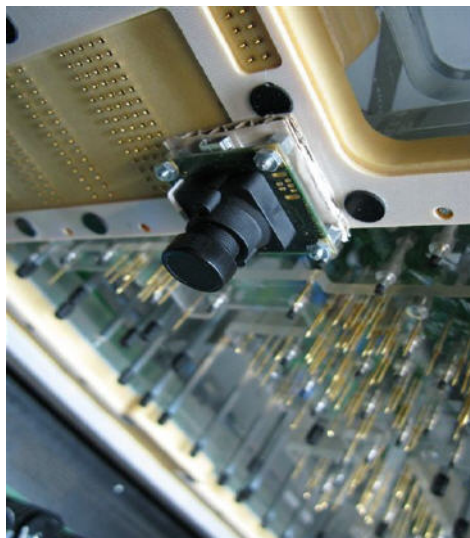
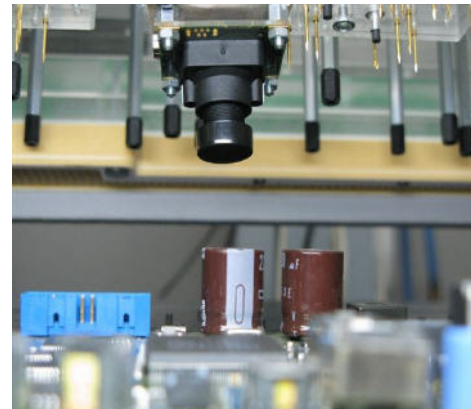
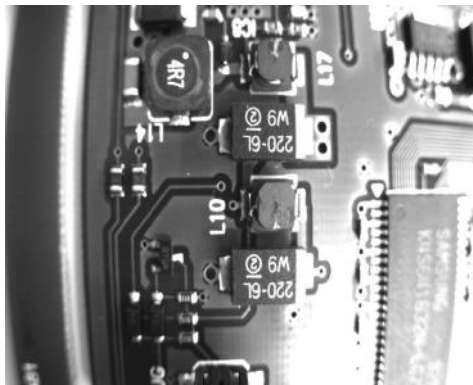
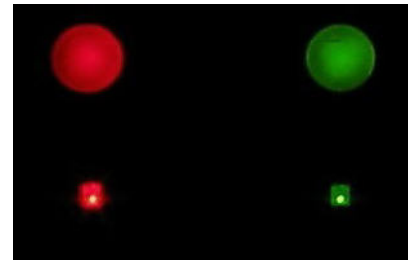
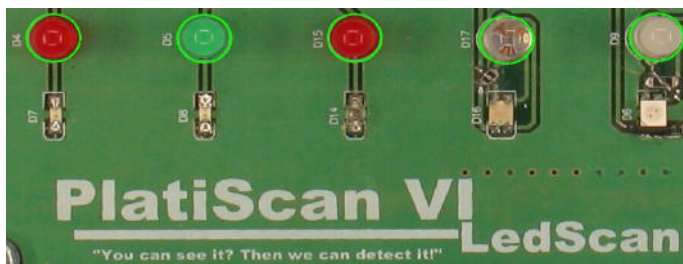
PlatiScan VI is a product of

AMARANT
S O F T W A R E

Stand: 01.01.2015

"You can see it? Then we can detect it!"

PlatiScan / PlatiJet Impression



Stand: 01.01.2015